

The INSTITUTE OF ELECTRICAL AND ELECTRONICS ENGINEERS, Inc.
Eastern Idaho Section
Idaho Falls Informal Seminars

TOPIC: ICIS/IEEE/ISA “Brew with the Crew” presents: From Monsters to MEMS

SPEAKER: Steven Hunter, ON Semiconductor

DATE: Thursday, April 15, 2010

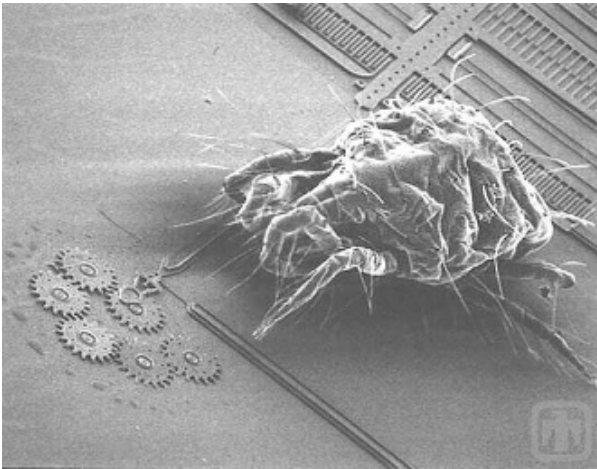
TIME: 4:30P.M.

PLACE: Hard Hat Steakhouse and Grill, 1175 Pier View Drive (Snake River Landing), Idaho Falls, Idaho

COST: Order your drinks from the menu. Light hors d'oeuvres provided by the crew organizers.

Abstract:

IEEE members make plans to join your colleagues for the May informal technical seminar series event “Brew with the Crew*” organized by the INL’s Instrumentation, Controls and Intelligent Systems (ICIS) Distinctive Signature, the Eastern Idaho Section of the Institute for Electrical and Electronics Engineers (IEEE) and the Idaho Falls branch of the International Society of Automation (ISA).



An introduction to MEMs and their micro-world. Micro-electromechanical devices are now in common use, mostly in places that you can’t see. Explosive growth is now expected in MEMs applications and production, especially in the medical field. MEMs processing technology comes directly from the semiconductor industry, extending old processes to new materials and films combinations, with the ability to create novel and bizarre, yet useful structures. Image Courtesy Sandia National Laboratory.

Biography:

Steven Hunter ON Semiconductor.

Work Experience: 30+ years in IC industry. Sr. Member IEEE, member American Vacuum Society. Experience in semiconductor processing, thin films, and quality/reliability engineering. Most of career was spent at HP in Calif and Oregon. Worked for Agilent Technologies in Colorado, then worked in Singapore 5 years as an assignee to Chartered Semiconductor Manufacturing, finishing there in 2006. Joined AMIS, now ON, in Pocatello in late 2006. Coauthor on a few papers on FeRAM development, and a paper on the use of DOE in semiconductor manufacturing. Have guest-lectured at ISU on roles of engineers in the semiconductor industry, design for reliability, ASIC reliability, VLSI design basics, MEMs, and design of experiments. Currently teaching a Probability, Statistics, and SQC “Engineering Methods” course as an adjunct professor at ISU. Education: BS Physics from BYU, 1978; currently finishing up MS in Measurement and Control Engineering at ISU, May graduation.

*Brew with the Crew is an after work event, that takes place every third Thursday of the month at the Brownstone to provide an opportunity for instrumentation, control and intelligent systems researchers and practitioners to interact with others in their community.

***** VISITORS AND NON-MEMBERS ARE WELCOME *****

PLEASE POST IN YOUR AREA